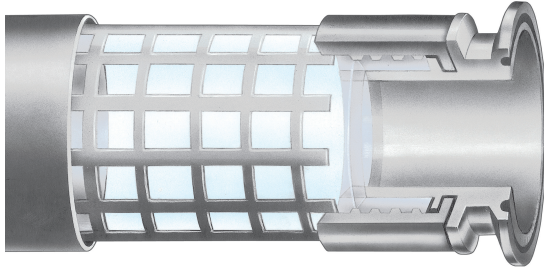


# Rubber Fab

a Garlock Hygienic Technologies company

## RFCSG



*Caged FEP Sight Gauge*

**TEMPERATURE:** -25°F to 300°F

**END CONNECTIONS:** 316L stainless steel sanitary Tri-Clamp®

Part Number	Hose ID Inch	Hose OD Inch	Wall Thickness	Max. Working Pressure @ 70°F
16RFCSG	1.00	1.25	0.125	250 psi
24RFCSG	1.50	1.75	0.125	200 psi
32RFCSG	2.00	2.35	0.175	100 psi
40RFCSG	2.50	2.75	0.145	100 psi
48RFCSG	3.00	3.25	0.177	100 psi
64RFCSG	4.00	4.25	0.216	100 psi

This product is factory fabricated.  
Consult factory for individual length limits.

### Features

- High pressure
- Liquid level indicators
- Sturdy, favorable in high stress applications
- High and low temperature rated
- Smooth, non-stick surface cleans easily and promotes minimal pressure drop
- Non-contaminating
- Will not impart taste or odor
- Shatterproof tube
- Will not discolor
- Unaffected by ultraviolet or sunlight

### Certifications

- 3-A Sanitary Standards
- FDA 21 CFR 177.1550
- USDA
- USP Class VI



26 Brookfield Drive • Sparta, New Jersey 07871

973.579.2959 • 866-442-2959 Toll Free • 973.579.7275 Fax • [www.rubberfab.com](http://www.rubberfab.com)